

Understanding your Utility Bill with Community Solar

IDAHO POWER CUSTOMERS

Overview

Every month, solar power is generated by the project connected to your solar subscription. The amount of solar energy produced directly results in discounts to your monthly utility bill. This document explains how community solar interacts with your utility bill.

Before We Begin

To better understand your utility bill, it helps to understand how electricity consumption is measured and the charges based on that consumption.

1. How Electricity Consumption is Measured

Every time you turn on a light bulb or plug in a device in your home, you are consuming electricity. The rate of power a device uses when it is turned on (or plugged in) is measured in watts (W) or kilowatts (kW). 1000 W = 1 kW. The rate of power a device consumes over time is measured in kilowatt-hours (kWh).

A couple examples:



$$\begin{array}{r} 100\text{W} \\ \times \\ 10 \text{ hours} \\ \hline = 1 \text{ kWh} \end{array}$$

A single 100W light bulb that stays on for 10 hours is equal to **1 kWh**.

If it stays on for 20 hours, it will use **2 kWh**.



$$\begin{array}{r} 1 \text{ kW} \\ \times \\ 1 \text{ hour} \\ \hline = 1 \text{ kWh} \end{array}$$

A washing machine that uses 1000W or 1 kW of power and stays on for a 1-hour cycle will consume **1 kWh** of energy.

2. How Your Bill Relates to Electricity Consumption

Your utility bill depends on a number of factors, including your electricity rate plan (examples include time of use (TOU) rate, fixed rate, or tiered rate), along with fees, taxes, and adjustments specific to your utility company and geographical location. The simplest way to calculate your monthly utility bill is to understand that the charges and fees you pay are largely based on the electricity you consume in a given month (kWh) multiplied by a per-kWh(\$/kWh) rate determined by your utility company.

Your Utility Bill + Community Solar

The following section will help you understand your bill as it exists now and changes that will impact your bill upon signing up for community solar. Use the sample bill provided by your utility company to help follow along.

Sections of Utility Bill (View full bill sample on pages 3–4)

1. Normal utility bill charges

These costs are based on your electricity consumption, taxes, fees, and adjustments—not solar energy production! After signing up for community solar, you will continue to be billed for the amount of electricity you consume every month per its normal schedule.

2. Bill Credits

Monthly discounts that accrue based on the amount of solar energy (kWh) produced through your solar subscription. Bill credits are applied according to a per-kWh rate (\$/kwh) determined by your utility company. Rates can be found in the table below.

3. Subscription Fees

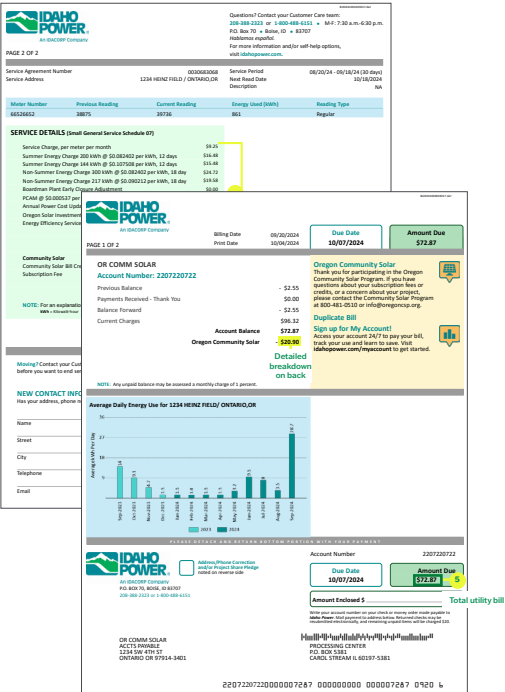
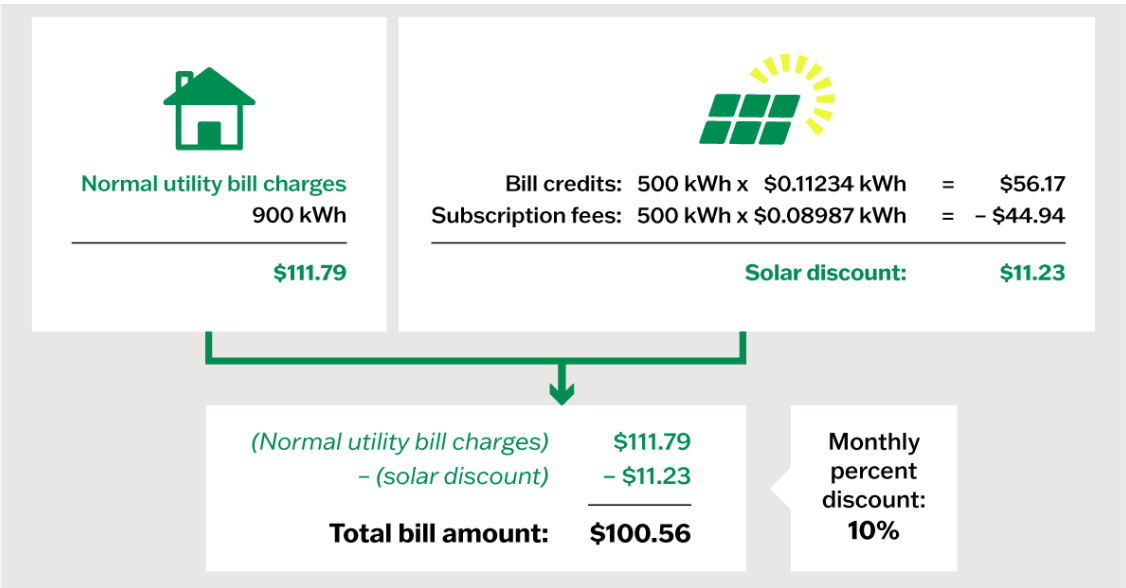
Bill Credit Rate	Portland General Electric	Pacific Power	Idaho Power
Tier 1*	\$0.11234	\$0.0977	\$0.0848

* Tier 1 bill credit rates are constant for the life of the project. There is no Tier 2 in Idaho Power territory.

Monthly fees that accrue based on the amount of solar energy (kWh) produced through your solar subscription. Subscription fees are applied according to a per-kWh rate (\$/kwh) determined by your Project Manager but are always lower than your bill credit rate.¹ In Tier 1 projects, subscription fees must be at least 20% less than your bill credits. In Tier 2 projects, subscription fees must be at least 40% less than your bill credits, i.e., these projects offer greater bill savings. The difference between bill credits and subscription fees accounts for your monthly discount! Subscription fee rates for individual projects can be found within the Project Finder on the ORCSP website.

4. Total Utility Bill

Your total electricity bill is calculated by subtracting your solar discounts from your electricity costs. Here is an example:



¹ Some projects offer greater discounts. Special circumstances apply for projects involving subsidized housing participants.

Sample Idah Power Utility Bill – front

BI20241003203017.dat



PAGE 1 OF 2

Billing Date 09/16/2024
Print Date 10/04/2024

Due Date
10/03/2024

Amount Due
\$0.00

LOW INCOME ORCSP

Account Number: 2226222622

Previous Balance \$388.56
Payments Received - Thank You - \$675.00
Balance Forward - \$286.44
Current Charges \$209.08

Account Balance - \$119.01
Oregon Community Solar - \$41.65

Detailed
breakdown on
back page

Oregon Community Solar

Thank you for participating in the Oregon Community Solar Program. If you have questions about your subscription fees or credits, or a concern about your project, please contact the Community Solar Program at 800-481-0510 or info@oregoncsp.org.



Duplicate Bill

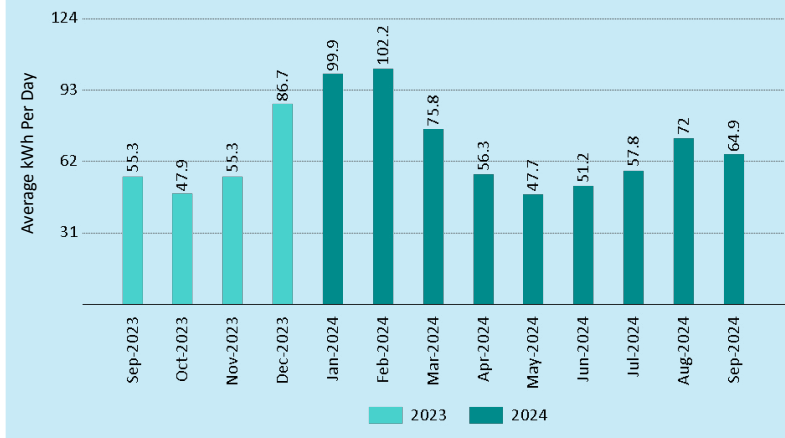
Sign up for My Account!

Access your account 24/7 to pay your bill, track your use and learn to save. Visit idahopower.com/myaccount to get started.



NOTE: Any unpaid balance may be assessed a monthly charge of 1 percent.

Average Daily Energy Use for 123 RIVERVIEW ST / ONTARIO,OR



PLEASE DETACH AND RETURN BOTTOM PORTION WITH YOUR PAYMENT



P.O. BOX 70, BOISE, ID 83707
208-388-2323 or 1-800-488-6151



Address/Phone Correction
and/or Project Share Pledge
noted on reverse side

Account Number 222622622

Due Date
10/03/2024

Amount Due
\$0.00

5

Amount Enclosed \$

Total utility bill

Write your account number on your check or money order made payable to **Idaho Power**. Mail payment to address below. Returned checks may be resubmitted electronically, and remaining unpaid items will be charged \$20.


LOW INCOME ORCSP
123 RIVERVIEW ST
ONTARIO OR 97914-1754



PROCESSING CENTER
P.O. BOX 5381
CAROL STREAM IL 60197-5381

22262262200000000000 0000000000 0000000000 0916 6

Sample Idaho Power Utility Bill – back



IDAHO POWER
An IDACORP Company

Questions? Contact your Customer Care team:
208-388-2323 or **1-800-488-6151** • M-F: 7:30 a.m.-6:30 p.m.
P.O. Box 70 • Boise, ID • 83707
Hablamos español.
For more information and/or self-help options,
visit idahopower.com.

PAGE 2 OF 2

Service Agreement Number	0033063306	Service Period	08/14/24 - 09/12/24 (30 days)
Service Address	123 RIVERVIEW ST / ONTARIO,OR	Next Read Date	10/14/2024
		Description	NA

Meter Number	Previous Reading	Current Reading	Energy Used (kWh)	Reading Type
66556655	88061	90008	1,947	Regular

SERVICE DETAILS (Residential Standard Plan Schedule 01)

Service Charge, per meter per month	\$8.00
Energy Charge 1,000 kWh @ \$0.082756 per kWh	\$82.76
Energy Charge 947 kWh @ \$0.096936 per kWh	\$91.80
Boardman Plant Early Closure Adjustment	\$0.00
PCAM @ \$0.000848 per kWh	\$1.65
Annual Power Cost Update @ \$0.007544 per kWh	\$14.69
Franchise Fee 3.50% Paid to Your City	\$6.96
Energy Efficiency Services	\$7.30
Oregon Solar Investment	\$0.91
Federal Columbia River Benefits Supplied by BPA	- \$4.99
Current Charges - Electric Service	\$209.08
Community Solar	
Community Solar Bill Credit	- \$208.25
Subscription Fee	\$166.60
Community Solar Charges	- \$41.65

1 Normal utility bill charges


2 Bill credits

3 Subscription fee

NOTE: For an explanation of these charges, go to idahopower.com/billglossary.
kWh = Kilowatt-hour

Moving? Contact your Customer Care team at least two business days before you want to end service.

NEW CONTACT INFORMATION FOR ACCOUNT NUMBER 2226222622
Has your address, phone number or email changed? Provide changes below.



Project Share

Help neighbors in need with energy costs.

☐ I pledge \$ on my monthly bill.

☐ Round up my monthly bill amount to the nearest dollar.

☐ I would like to make a one-time donation of \$

For more information, visit idahopower.com/projectshare.

Thank you!

4

Total Annual Discounts

Most participants of the Oregon Community Solar Program can expect to save between 10-15% on their electricity bills every year.² Your annual discount in dollars will depend on the size of your subscription. To learn more about how this works, please refer to our **solar savings** document.

We support you.

If you find that you need extra assistance, please feel free to reach out to us at:

CommunityEnergyProject.org

Community Solar Coordinator

971-544-8718

solar@communityenergyproject.org

² Percent savings vary according to your utility company.