

Understanding your Utility Bill with Community Solar

Overview

Every month, solar power is generated by the project connected to your solar subscription. The amount of solar energy produced directly results in discounts to your monthly electricity bill. This document explains how community solar interacts with your bill.

Before We Begin

To better understand your bill, it helps to understand how electricity consumption is measured and the charges based on that consumption.

1. How Electricity Consumption is Measured

Every time you turn on a light bulb or plug in a device in your home, you are consuming electricity. The rate of power a device uses when it is turned on (or plugged in) is measured in watts(W) or kilowatts(kW). 1000 W = 1 kW. The rate of power a device consumes over time is measured in kilowatt-hours (kWh).



$$\begin{array}{r} 100W \\ \times \\ 10 \text{ hours} \\ \hline = 1 \text{ kWh} \end{array}$$

A single 100W light bulb that stays on for 10 hours is equal to **1 kWh**.

If it stays on for 20 hours, it will use **2 kWh**.



$$\begin{array}{r} 1 \text{ kW} \\ \times \\ 1 \text{ hour} \\ \hline = 1 \text{ kWh} \end{array}$$

A washing machine that uses 1000W or 1 kW of power and stays on for a 1-hour cycle will consume **1 kWh** of energy.

2. How Your Bill Relates to Electricity Consumption

Your utility bill depends on a number of factors, including your electricity rate plan (examples include time of use (TOU) rate, fixed rate, or tiered rate), along with fees, taxes, and adjustments specific to your utility company and geographical location. Look at your electricity bill to see a breakdown of your electricity costs.

Your Utility Bill + Community Solar

The following section will help you understand your bill as it exists now and changes that will be added once you sign up for community solar. Use the sample bill provided by your utility company to help follow along.

Sections of Utility Bill (View full bill sample on pages 3–5)

1. Normal utility bill charges

These costs are based on your electricity consumption, taxes, fees, and adjustments—not solar energy production! After signing up for community solar, you will continue to be billed for the amount of electricity you consume every month per its normal schedule.

2. Bill Credits

Monthly discounts that accrue based on the amount of solar energy (kWh) produced through your solar subscription. Bill credits are applied according to a per-kWh rate (\$/kWh) determined by your utility company. Rates can be found in the table below.

Bill Credit Rate	Portland General Electric	Pacific Power	Idaho Power
Tier 1	\$0.11234	\$0.0977	\$0.0848
Tier 2 (residential)	\$0.11234	\$0.0977	-
Tier 2 (non-residential)	\$0.101106	\$0.08793	-

*Tier 1 bill credit rates are constant for the life of the project. Tier 2 bill credit rates are effective through March 2023 and will escalate 2% each year beginning in April 2023 for residential and non-residential customers.

3. Subscription Fees

Monthly fees that accrue based on the amount of solar energy (kWh) produced through your solar subscription. Subscription fees are applied according to a per-kWh rate (\$/kWh) determined by your Project Manager. Tier 1 subscription fee rates are constant for the life of the project. Tier 2 subscription fee rates will also escalate each year according to the same timing as the bill credit rate.

4. Program Administration Fees


Monthly fees that recover the costs of administering the Oregon Community Solar Program (\$/kW-AC per month). Some Project Managers may choose to pay these fees on behalf of subscribers, and therefore the subscriber does not pay them directly. Instead, the cost of these fees are included in the customer’s subscription fee rate. Low-income customers are exempt from paying all program administration fees. Fees may be updated on an annual basis by a process overseen by the Oregon Public Utility Commission.

All fees paid on a \$/kW-month basis	Portland General Electric	Pacific Power	Idaho Power
Program Administrator Fee	\$0.85	\$0.85	\$0.85
Utility Fee	\$0.11	\$0.20	\$0.48
Total Program Fee	\$0.96	\$1.05	\$1.33

5. Total Utility Bill

Your total electricity bill is calculated by subtracting your solar discounts from your electricity costs and fees. Here is an example:

Normal utility bill charges:



\$111.79

Community Solar charges and credits:

Bill credits: 500 kWh x \$0.11234 kWh = \$56.17

Subscription fees: 500 kWh x \$0.10 kWh = - \$50.00

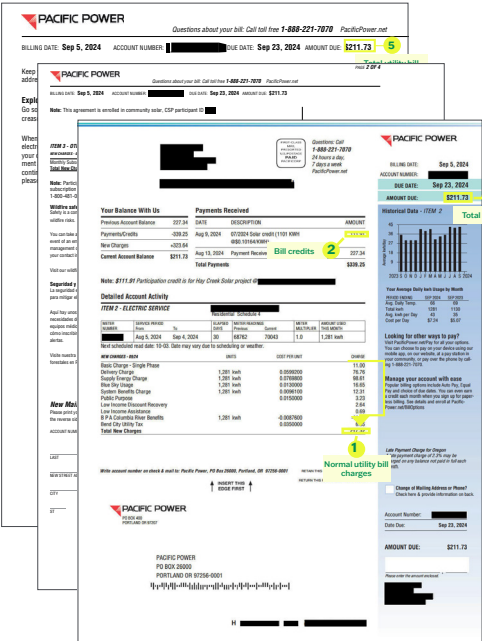
Program fee: 3 kW x \$0.96 = - \$2.88

Solar discount: \$3.29

(Normal utility bill charges) \$111.79

- (solar discount) - \$3.29

Total bill amount: \$108.50





Questions about your bill: Call toll free 1-888-221-7070 PacificPower.net

BILLING DATE: **Sep 5, 2024** ACCOUNT NUMBER: [REDACTED] DUE DATE: **Sep 23, 2024** AMOUNT DUE: **\$211.73****Note:** This agreement is enrolled in community solar, CSP participant ID [REDACTED]**ITEM 3 - OTHER SERVICE**

Hay Creek Solar Schedule 127

NEW CHARGES - 07/24

UNITS

CHARGE

Monthly Subscription Fee

3

Subscription fee

106.32

Total New Charges**106.32**

Note: Participant fees for service address [REDACTED] If you have questions about your subscription fee, solar credit, or a concern about your project, please contact Community Solar Program at 1-800-481-0510 or email: info@oregoncsp.org.

Wildfire safety & preparedness

Safety is a community effort that takes all of us working together. At Pacific Power, we're continuing to take steps to mitigate wildfire risks.

You can take action at home: Make a plan, create defensible space around your home, and plan for your family's needs in the event of an emergency. Consider a backup generator if you have medical equipment. Check your local emergency management or public safety website for more information on how to sign up for alerts. It's also important for you to update your contact information and sign up for alerts with us.

Visit our wildfire safety web page to prepare for wildfire season at [PacificPower.net/WildfireSafety](https://www.pacificpower.net/WildfireSafety).

Seguridad y preparación

La seguridad es un esfuerzo comunitario que requiere la colaboración de todos. En Pacific Power seguimos tomando medidas para mitigar el riesgo de incendios forestales.

Aquí hay unos pasos para prepararse: Cree un plan, identifique un espacio defendible alrededor de su casa y prevea las necesidades de su familia en caso de emergencia. Considere la posibilidad de instalar un generador de reserva si tiene equipos médicos. Consulte la página web local sobre emergencias o seguridad pública para obtener más información sobre cómo inscribirse para recibir alertas. También es importante que actualice sus datos de contacto y se inscriba para nuestras alertas.

Visite nuestra página web sobre seguridad contra incendios forestales para prepararse para la temporada de incendios forestales en [PacificPower.net/Listo](https://www.pacificpower.net/Listo).

New Mailing Address or Phone?

Please print your new information below and check the box on the reverse side of this Payment Stub. Thank you.

ACCOUNT NUMBER: [REDACTED]

LAST

FIRST

M.I.

NEW STREET ADDRESS

CITY

ST

ZIP

TELEPHONE NUMBER

This product contains
fiber from well-managed,
independently
certified forests.



Questions about your bill: Call toll free 1-888-221-7070 PacificPower.net

BILLING DATE: Sep 5, 2024 ACCOUNT NUMBER: [REDACTED] DUE DATE: Sep 23, 2024 AMOUNT DUE: \$211.73

5

Keep your contact information current so we can reach you. Login at PacificPower.net, create an online profile with your address and mobile number, or call us with your updates at 1-888-221-7070.

Total utility bill

Explore solar

Go solar with Solarize Deschutes! Access discounts, workshops, pre-qualified contractors & Energy Trust of Oregon increased incentives for income qualified. Get a no-obligation bid by Oct. 31 at www.energytrust.org/solarize-deschutes.

When you provide a check as payment, you authorize us to use the information from your check either to make a one-time electronic fund transfer from your account or to process the payment as a check transaction. When we use information from your check to make an electronic fund transfer, funds may be withdrawn from your account as soon as we receive your payment and you will not receive your check back from your financial institution. If you would like to opt out of this program and continue processing your payment as a check transaction, please call 1-800-895-0561. If you have opted out previously, please disregard this message.

Total Savings

A customer's overall savings will depend on the subscription fees charged by their Project Manager and their subscription size. To learn more about how this works, please refer to the Oregon Community Program Bill Impact Calculator.

We support you.

If you have any questions, please feel free to reach out to us at:

OregonCSP.org

1-800-481-0510

info@oregoncsp.org